

# M4L2

MOBILE THERMAL PRINTER

- ||||| CONSTANT CONNECTIVITY
- ||||| HIGH-PERFORMANCE BATTERY
- ||||| RUGGED DESIGN



**PRINTRONIX®**  
WHEN RELIABILITY COUNTS



The **M4L2** stands for power, reliability and ultimate mobility. Showcasing the industry's first high-performance WiFi radio module with Dual-Antenna Technology, best-in-class battery life and rugged design, the **M4L2** is built to improve your bottom line by increasing efficiency.



## Dual-Antenna

### CONSTANT CONNECTIVITY

- ▶ Dual-Antenna technology extends WiFi range and reduces dead spots
- ▶ Supercharged radio module increases data transmission speeds for faster label printing
- ▶ Supports frequency bands of both 2.4 GHz and 5.0 GHz for robust networking
- ▶ Compatible with 802.11 a/b/g/n standards



### HIGH-PERFORMANCE BATTERY

- ▶ 11% more battery life than leading competitive models
- ▶ Powers a full work shift, even with the most demanding work load



### RUGGED DESIGN

- ▶ Rubber-infused over-molding construction for enterprise-grade durability
- ▶ Drop-resistant from 5ft (1.5m) onto concrete surfaces
- ▶ IP54 certified with optional case-protector for increased resistance to water, dust, and drop-protection up to 6ft (1.8m)



# Longer Uptime, Easier Integration, and Printronix Reliability You Can Trust.

Ready to run all shift long thanks to a long battery life, and fully compatible with other competitive models, the M4L2 is factory-ready for ZPL II® or CPCL, and connects directly to your legacy host systems and peripheral devices for quick and easy integration.

## Key Features

- ▶ Dual-Antenna Technology delivers high-performance wireless connections and increased mobility.
- ▶ High-capacity, rechargeable Lithium-Ion battery lasts all shift long.
- ▶ Rubberized over-molding external case survives many 5 foot (1.5 m) drops.
- ▶ High speed processor and extensive memory options enable fast printing.
- ▶ Large, backlit LCD display with intuitive menu keys makes printer use easy.
- ▶ Wireless modules in Bluetooth or secure WPA2 WiFi 802.11 a/b/g/n allow for local and networked systems connections.
- ▶ Large label roll capacity reduces time lost to roll changes.

## Printronix Consumables and Labels

Choose from our large selection of label media specially designed for the best M4L2 performance. Always use genuine Printronix products to get the best print quality, increase reliability, and extend your printer's life.

## Printronix Services

At Printronix, our top priority is to provide our customers with solutions that keep their printers operating at optimal levels. Our M4L2 Service Programs will increase printer uptime, prevent unexpected repair costs, and ensure that your printer will be always serviced by a factory-certified, trained technician. Printronix offers a wide variety of Depot Service offerings, designed to fit your needs.

For information on Printronix service or maintenance, please visit: <https://printronix.com/ptx-pro-services>.

## Printer Accessories



**Heavy Duty Metal Belt Clip**  
258236-001



**Velcro Belt Loop**  
258302-001



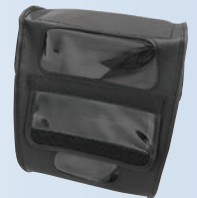
**Shoulder Strap**  
258239-001



**Forklift Mount Kit**  
258290-001



**Lithium-Ion Battery**  
258235-001



**IP-54 Case Protector  
(Up to 6ft Drop)**  
258152-001



**USB to RS232 Adapter**  
258238-001



**Vehicle Power Adapter**  
258240-001



**AC Single-Unit Charger\***  
258233-001 Americas  
258233-002 Europe  
258233-003 United Kingdom



**Single Bay Battery  
External Charger\***  
258314-001 Americas  
258314-002 Europe  
258314-003 United Kingdom



**Quad 4-Battery Bay  
External Charger\***  
258234-001 Americas  
258234-002 Europe  
258234-003 United Kingdom

\* M4L2 Mobile Printer does not come with power charger.



# M4L2

## SPECIFICATIONS

### M4L2 MOBILE THERMAL PRINTER

High Capacity 7.2V DC (42 Wh) Lithium-Ion Battery  
Rugged Industrial Design  
Dual Antenna Technology  
Dual Frequency Band - 2.4GHz and 5.0GHz  
Supports 802.11 a/b/g/n (MIMO capable)  
Advanced Roaming Algorithm



#### PRODUCT BENEFITS

- \* Strong and reliable wireless connections for ultimate mobility
- \* Highest battery power for continuous printing
- \* High performance 32-Bit RISC Processor
- \* Multiple drops resistant up to 5 feet (1.5m)
- \* Rubber-infused rugged industrial design
- \* One-Hand easy to change media
- \* Enterprise Grade Secure WiFi or Bluetooth
- \* Large and Intuitive 4 Buttons 2" LCD display panel (256 x 128 pixels)
- \* Large media roll capacity for higher productivity

#### PRINTER SPECIFICATIONS

Print Speed	4"/102mm per second
Print Method	Direct Thermal
Resolution	203 dpi / 8 dots per mm
Min/Max Print Width	2.0" (50.8mm) / 4.09" (104mm)
Printer Memory	32MB RAM / 16MB Flash Up to 4GB SD Card (Option)

#### MEDIA SPECIFICATIONS

Media Type	Labels, Receipts, Die-Cut, Roll-Fed, Black Mark and Fan-Fold
Min/Max Media Width	2.0" (50.8mm) / 4.4" (112mm)
Media Length (Min/Max)	0.5" - 90" (12.7 - 2,286mm) 1.0" - 6.0" (25.4 - 152.4mm) for Peel
Media Thickness	2.2 - 6.5 Mil (0.055 - 0.165mm)
Max Media Capacity	2.65" OD (67.3mm)
Media Sensing	Transmissive, Reflective, Peel
Media Handling Modes	Tear-Off, Peel-Off,

#### PHYSICAL CHARACTERISTICS

Width	6.30" (160mm)
Height	7.54" (191.6mm)
Depth	3.11" (79mm)
Weight	2.43 lbs (1.1 kg) with Battery

#### PROGRAMMING PRINTER LANGUAGES

ZPL II	Standard
CPCL	Standard

#### COMMUNICATION AND INTERFACE

USB 2.0 Full Speed	Standard
Optional Interfaces	WiFi 802.11 a/b/g/n or Bluetooth
WiFi Security	WEP, WPA Personal: TKIP/CCMP WPA2 Enterprise: EAP-TLS, EAP-TTLS, PEAP, LEAP

#### OPERATING ENVIRONMENT

Operating Temperature	14 to 122 F (-10 to 50 C)
Operating Humidity	10 to 90% Non-Condensing
Storage Temperature	-40 to 140 F (-40 to 60 C)
Storage Humidity	10 to 90% Non-Condensing
Drop Specification	5 Ft. (1.5m) / 6 Ft. (1.8m) w/Case

#### REGULATORY COMPLIANCES

Emissions	FCC, CE
Safety	TUV, CE
Environmental	RoHS, WEEE
IP54 Certified	w/Optional Case

#### BATTERY REQUIREMENTS

7.2V DC (41.7 Wh), 5800mAh Lithium-Ion Battery, Standard (Rechargeable)

#### BAR CODE SYBOLOGIES

1D Barcodes	Code 11, Code 39, Code 93, Code 128UCC, Code128 Subsets A.B.C., Codabar, Interleave 2 of 5, EAN-8, EAN-13, EAN-14, EAN-128, UPC-A, UPC-E, EAN and UPC2 (5) Digits, MSI, PLESSEY, POSTNET, China Post ITF14, TELEPEN, PLANET, Deutsche Post Identcode/Leitcode, LOGMARS
2D Barcodes	Code 49, PDF-417, MicroPDF-417, Maxicode, DataMatrix, QR Code, Aztec, CODABLOCK F Mode, GS1 Databar

#### RESIDENT FONTS

8 Alpha-Numeric Bitmap Fonts, Monotype Imaging True Type Font Engine with One CG Triumvirate Bold  
Condensed Scalable Font

#### SOFTWARE UTILITY

M4L2 Configuration Utility	Standard
----------------------------	----------

#### MANUFACTURER WARRANTY

Printer	1 Year Parts and Labor
Pinthead	1 Million Inches (25km) or 6 months

#### OPTIONS & ACCESSORIES

Spare Lithium-Ion Battery	USB to RS-232 Converter Cable
Vehicle Power Adapter	AC Single-Unit Charger*
IP54 Protective Case	Quad 4-Battery Bay External Charger*
Shoulder Strap	Single 1-Battery Bay External Charger*
Velcro Belt Loop	Heavy Duty Metal Belt Clip
Forklift Mount Kit	

\* M4L2 does not come with any power charger. Must order one of the printer charger.

Printronix offers a wide selection of standard and custom media to ensure your thermal printer is ready for all mission critical applications. Contact your Printronix supplies reseller for Genuine Printronix Labels, go to [www.primtronix.com](http://www.primtronix.com) or call (800) 665-6210 to order today.

© 2015 Printronix, Inc. All rights reserved. Printronix and all product names, numbers and logos are trademarks or registered trademarks of Printronix, Inc. Product appearance and/or specifications are subject to change without notice. Windows® is a registered trademark of Microsoft Corporation™ in the United States and other countries. All other trademarks, product names and company names and logos herein, are the property of their respective owners. PTX-30015 (9/15)



Contact your local Printronix authorized reseller.

**PRINTRONIX®**  
WHEN RELIABILITY COUNTS

[www.primtronix.com](http://www.primtronix.com)

